

\*\*\*

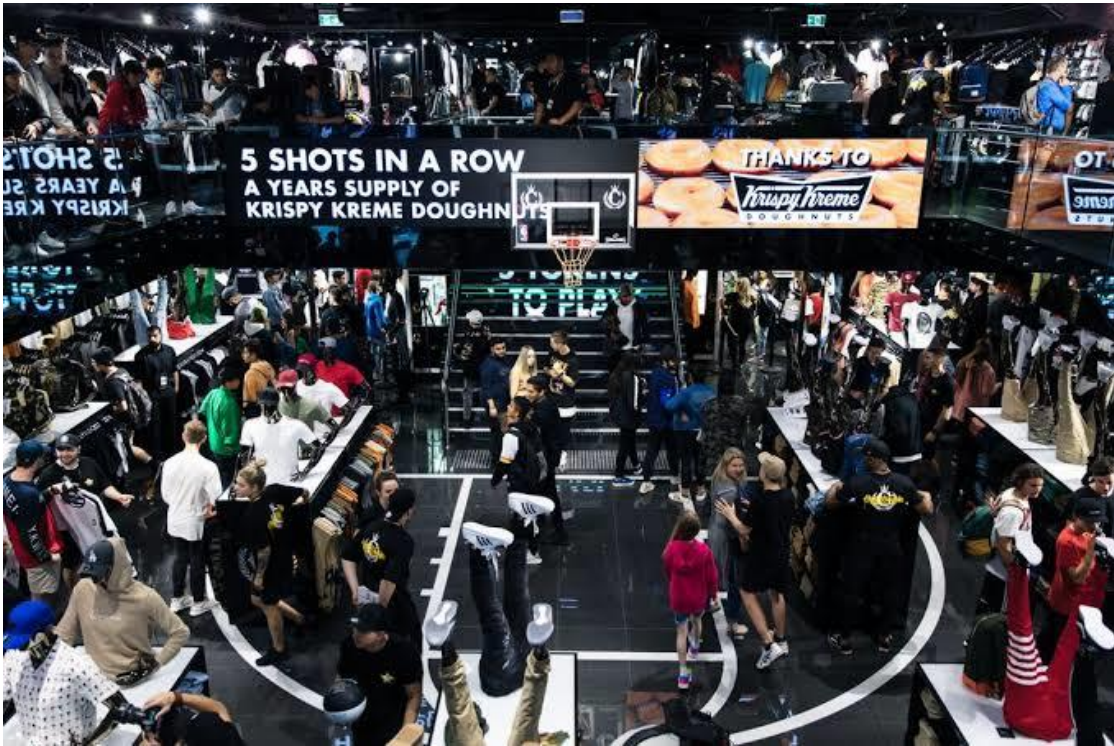
## MARKET BRIEF

\*\*\*

<b>Tenancy Size:</b>	1,000sqm
<b>Target Area:</b>	Auckland CBD
<b>Building Type:</b>	High Street, could be old cinema or similar, high ceilings, basement, ground or 1 <sup>st</sup> floor
<b>Lease term on offer:</b>	Five (5) + Five (5) years
<b>Store opening videos:</b>	<a href="#">Melbourne CBD</a>
<b>Timing:</b>	Now!
<b>Other:</b>	<ul style="list-style-type: none"> <li>— Website - <a href="http://www.culturekings.com.au">www.culturekings.com.au</a></li> <li>— Instagram - <a href="http://www.instagram.com/culturekings">www.instagram.com/culturekings</a></li> <li>— TLG is retained by Culture Kings</li> </ul>



Contact: Philip Reichelt 0418 961 045 / [philip.reichelt@tl-group.com.au](mailto:philip.reichelt@tl-group.com.au)



Contact: Philip Reichelt 0418 961 045 / [philip.reichelt@tl-group.com.au](mailto:philip.reichelt@tl-group.com.au)

Suite 12.06, Level 12, 14 Martin Place  
Sydney NSW 2000  
[www.tl-group.com.au](http://www.tl-group.com.au)