



a.k.a.

**TLG**  
TENANT LEASING GROUP

Required to Lease

**400 - 800 sqm | Retail  
Brisbane CBD**

**Handover mid-2025**



On behalf of: [Culture Kings](#)  
Submissions due: ASAP

Contact: Phil Reichelt  
Phone: 0418 961 045  
Email: [philip.reichelt@tl-group.com.au](mailto:philip.reichelt@tl-group.com.au)

Tenant Leasing Group (TLG) is a commercial property advisory & lease negotiator for warehouses, industrial & logistics, office, large format, and multi-site retail.

Level 1, 343 George Street  
Sydney, NSW 2000  
Australia  
[tl-group.com.au](http://tl-group.com.au)



a.k.a.

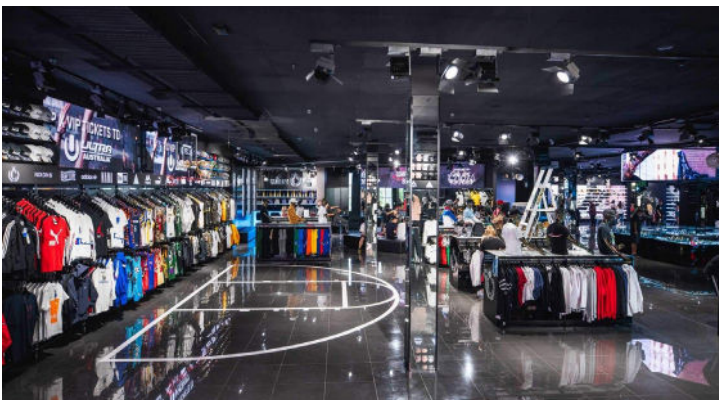
**TLG**  
TENANT LEASING GROUP

## Market Brief / Site Specification

- |   |   |
|---|---|
| <b>Tenancy Size</b>                     | <ul style="list-style-type: none"><li>• 400 - 800 sqm</li></ul>   |
| <b>Premises Type and Specifications</b> | <ul style="list-style-type: none"><li>• Retail</li><li>• Prime CBD location</li><li>• High street</li><li>• Shopping centres</li><li>• High ceilings</li></ul>  |
| <b>Current locations</b>                | <ul style="list-style-type: none"><li>• Perth</li><li>• Sydney CBD</li><li>• Chadstone</li><li>• Melbourne Lanes</li><li>• Pacific Fair</li><li>• Parramatta</li><li>• Auckland</li><li>• Las Vegas</li></ul> |
| <b>Case study</b>                       | <ul style="list-style-type: none"><li>• <a href="#">Westfield Parramatta</a></li></ul>  |

- |                        |   |
|------------------------|---|
| <b>Lessee</b>          | <ul style="list-style-type: none"><li>• Culture Kings Pty Ltd</li></ul>   |
| <b>Lease Term</b>      | <ul style="list-style-type: none"><li>• Five (5) plus years for the right site</li></ul>  |
| <b>Timing</b>          | <ul style="list-style-type: none"><li>• Handover mid-2025</li></ul>   |
| <b>Links</b>           | <ul style="list-style-type: none"><li>• <a href="https://culturekings.com.au/">culturekings.com.au/</a></li><li>• <a href="https://instagram.com/culturekings">instagram.com/culturekings</a></li><li>• <a href="https://facebook.com/culturekings">facebook.com/culturekings</a></li><li>• <a href="https://tiktok.com/@culturekings">tiktok.com/@culturekings</a></li><li>• <a href="https://twitter.com/culturekings">twitter.com/culturekings</a></li></ul> |
| <b>Consultant Fees</b> | <ul style="list-style-type: none"><li>• TLG is retained by Culture Kings</li></ul>  |

- |                |  |
|----------------|--|
| <b>Contact</b> | <ul style="list-style-type: none"><li>• Phil Reichelt (Director, TLG)</li><li>• <a href="tel:0418961045">0418 961 045</a></li><li>• <a href="mailto:philip.reichelt@tl-group.com.au">philip.reichelt@tl-group.com.au</a></li></ul> |
|----------------|--|



On behalf of: [Culture Kings](#)  
Submissions due: ASAP

Contact: Phil Reichelt  
Phone: 0418 961 045  
Email: [philip.reichelt@tl-group.com.au](mailto:philip.reichelt@tl-group.com.au)

Tenant Leasing Group (TLG) is a commercial property advisory & lease negotiator for warehouses, industrial & logistics, office, large format, and multi-site retail.

Level 1, 343 George Street  
Sydney, NSW 2000  
Australia  
[tl-group.com.au](https://tl-group.com.au)